

Examples and Merits of World Wide Navi

Supports Engineers for Internationalized Software Development

- As the recruitment of rare internationalization experts is unnecessary, personnel cost reductions are possible.
- Reduce the burden on internationalization engineers and realize high quality development quantitatively.

An Educational Tool for International Programming

- It is possible to study software internationalization, which previously generally relied on self-study, more efficiently now via the tool.
- Practical study is possible using actual source code examples.

A Planning Tool for Market Expansion

- Forecasting development cost for internationalization is normally difficult to grasp. By using **World Wide Navi**, it is easier to estimate development cost for appropriate management. As a result of the speedy establishment of overseas expansion, new business opportunities won't be missed.

Hardware/Software requirements

OS	<ul style="list-style-type: none"> •Linux (Red Hat Enterprise Linux 3 WS, MIRACLE LINUX V3.0/V4.0, SuSE LINUX Professional 9.3, other) •Windows XP Professional, other
Prerequisite software	<ul style="list-style-type: none"> •Sun JVM 1.4.x or greater •GTK (only Linux) •Eclipse 3.0 or greater (only when used as plug-in)
Hardware requirements	<ul style="list-style-type: none"> •IA32 compatible CPU, 1GHz or greater. •256MB or more memory. If using as an Eclipse plug-in, then 512MB or more. •Free disk space of approximately 50MB or more.



Kokusaika JP, Inc.

URL: <http://www.kokusaika.jp/>
 TEL: +81-3-6206-8523
 FAX: +81-3-6206-8524
 Email: kjp-sales@kokusaika.jp



World Wide Navi

Software Internationalization Tool

希望可以成为滋润中国人民生活的科技之火
 更加安心的每一天，这是我们每个人的愿望。
 领先时代的最尖端技术并站在尊重每个人

यह क्या है?
 यह रेडियो है।
 क्या यह सौगात है?
 जी नहीं, यह सौगात नहीं है।
 क्या आप सतों जी है?

Le ciel est, par-dessus le toit
 Si bleu, si calme !
 Un arbre, par-dessus le toit
 Berce sa palme.

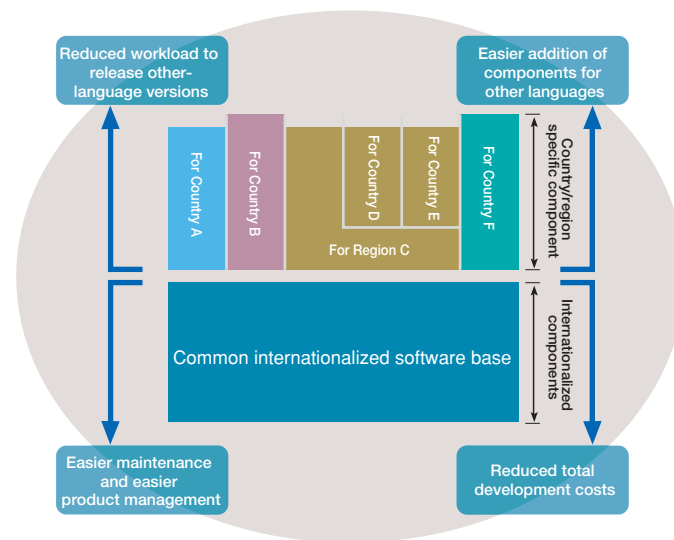
Software internationalization, a must for global businesses

Software internationalization Tool World Wide Navi

With the expansion of network infrastructure such as the Internet, the globalization of business has been further promoted and the strengthening of one's ability to compete on the global market has become a major issue for enterprises. As part of this, in relation to computer software, the provision of products and services that look ahead to the global market is being demanded. However, the reality is that as a result of the simplistic awareness towards internationalization of software and not enough consideration being paid to global services, a concrete response to this still requires a significant investment of time. On the other hand, although recently offshore developments mainly focusing on cost reduction have made rapid progress, before high quality internalization is realized there are still many issues to overcome, such as securing technicians with sufficient experience and know-how and time limitations. Because of this, the importance of internationalization that allows for the most appropriate software for the target market to be introduced, thus realizing efficiency gains and cost reduction, is gaining significant attention.

What is software internationalization?

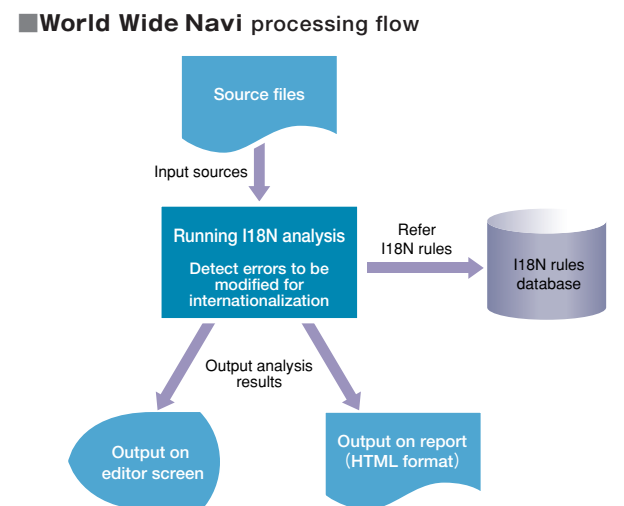
Responsiveness to different regions including the culture, language and customs of multiple countries and regions. Internationalization (I18N) of software means designing and developing software so that localization (L10N) work is reduced to the bare minimum possible and common universal aspects are increased to the extent possible. The software internationalization enables 'Reduction of development volume', 'Assurance of high quality', 'Ease of Administration' and 'Reduction of total cost', and thus the execution of a global business becomes overwhelmingly advantageous.



Software Internationalization Tool World Wide Navi

World Wide Navi analyzes the software's source codes, and finds the problems that need to be fixed when making the software internationalized. It helps developers navigate source codes by indicating the lines to be modified and how to modify them. By grasping the internationalization work quantitatively with World Wide Navi, efficient and quality internationalization can be achieved regardless of the developer's skill (knowledge, experience and intuition), whereas it was dependent on them before.

*World Wide Navi is currently the subject of a trademark registration application.
*World Wide Navi's technology is currently the subject of a patent application.



Features

Intelligent analysis function

Rather than through exact string matching, World Wide Navi analyzes programs after a syntax analysis appropriate to the respective programming language. It also has a function to exclude a sequence of source codes from the analysis.

Preset diagnostic rules

Standard diagnostic rules are available upon installation and can be used immediately.

Customizable analysis rules

The analysis rules can be easily added or changed to suit the target programs by using the GUI.

Various modes of usage

Can be used as a GUI application, with a batch command, and as an Eclipse plug-in.

Various output formats

Error reports are displayed on screen or can be written to files in 3 different formats (HTML, CSV, TEXT).

Multiplatform support

Runs on Linux and Windows platforms.

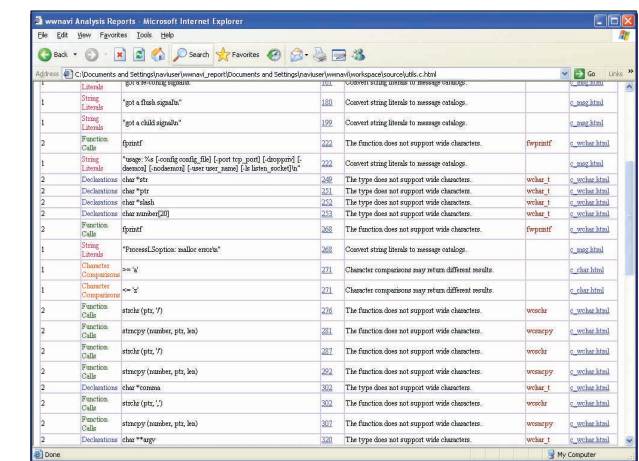
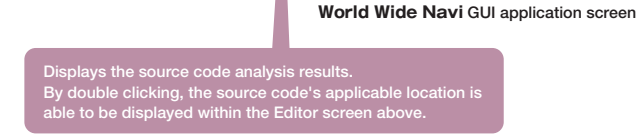
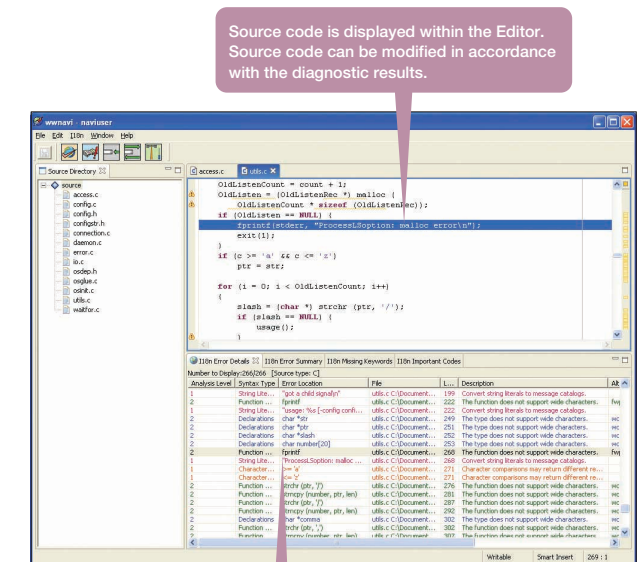
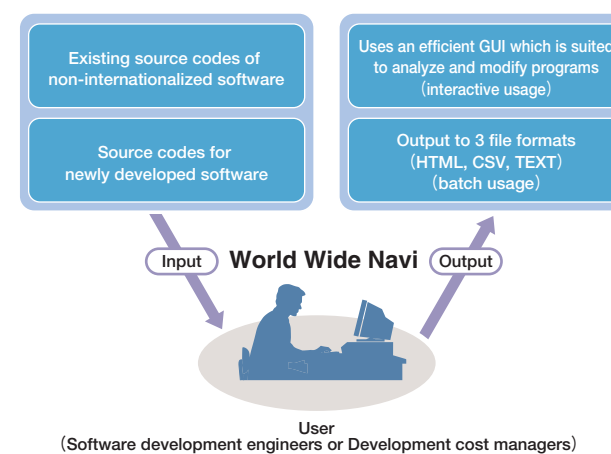
Multiple programming language support

Supports C, C++, and Java.

Internationalization of World Wide Navi itself

The World Wide Navi software itself has been internationalized. GUI is prepared both in Japanese and English.

Usage image



World Wide Navi analysis results (HTML) are displayed with a browser